

Photographs on Wood

Complete step by step guide to transferring any photograph to all types of wood



Guide and Photographs by Cris A Hayes

www.marvinduke.com

©2014 Cris A Hayes



We have all seen companies on the internet selling wood plaques with your images printed directly onto the wood. These finished products are, to say the least, unlike anything you have ever seen. You will see your photographs in a new light. The results will blow you away. The price these companies charge for photographs on wood will also blow you away. Even small images like 5x7 can run as high as \$50.00 or more not including shipping and tax.

After following this guide, you will be able to produce the same results for less than \$10.00 per plaque in your own garage.

So, if you are ready, let's get started cracking the code of photographs on wood.

Image Selection

Keep in mind, all light or white colors will allow the wood grain to be seen clearly on the wood plaque. Pictures of with little to no difference in contrast often do not make for a good picture to use. The picture below looks great on photographic paper but once transferred to wood the trees and image contrast make this picture a poor candidate for this process.



© CRIS HAYES - DO NOT COPY

So what type of pictures are good to use and why? Pictures which tend to be close to the subject matter with good separation between colors, background and well balanced contrast. As for the why, everyone needs to answer this for themselves. Bottom line, if you like it, this is all that matters. Below is an example of a good image to use for this process.



© CRIS HAYES - DO NOT COPY

Printing the Picture

Ink jet prints will not work for this process. **You must use color laser printer for this process to work as outlined in this guide.** Very few people have a color laser printer sitting around their house. However, Staples or Office Max can print your color laser prints while you wait. The cost will range from \$.40 to \$.60 a print.

Printing Tips

- Be sure to save your images to a jump drive
 - Save the images flipped or reversed - More on this later...



© CRIS HAYES - DO NOT COPY

- Print the pictures on regular 20lb copier paper
- Have images printed so they do not crop any of the picture
- Color laser printers can print on 8.5x11 to 13x19 paper with a small with border around the image

Preparing the wood

Most any type of wood will work for this process. The key is to make sure the wood is as smooth as possible. Try to avoid wood with knot holes as this tends to detract from the image and overall quality. Try to use 1/2 wood to avoid warping.

Once the wood has been sanded apply a medium coat of Liquitex Medium Matte Gel the surface of the wood using a sponge brush.



[CLICK HERE TO ORDER ALL THE SUPPLIES NEEDED](#)

Make sure the gel is evenly spread across the wood surface. The edges tend to miss out on an even coat, be sure to double check the edges before completing the process.

Applying the color laser print to the wood

A quick review, the board has been sanded, the matte gel has also been applied evenly across the board. Now we are ready to place the color laser print onto the wood. **The image must be placed FACE DOWN on the wood.** The printed side of the color laser print will come into contact with the matte gel.

Once the color laser image is on the wood. You will need to burnish the back of the paper. This can be done with the back of a large spoon or roller. Have you have burnished the paper, take an old credit card and pull it across the back of the paper to help remove bubbles and excess matte gel. For around \$6.00, you can purchase the following roller and thick rubber card from [here](#). This has proven to produce the best results.



Once you have completed these steps, the matte gel will need to dry overnight. If the sun is out, place the wood plaque with the paper applied in the sunlight for 3 or 4 hours before proceeding to the next step.

Removing the Paper

First thing everyone needs to know when starting this step, take it slow and do not rush.

Apply a small amount of water to the back of the paper. You will start to see some of the image appear as the water soaks into the paper. It is very important to allow the water to completely work into the paper. However, do not apply too much water. The red arrow is showing an area where the water has not completely soaked into the paper.



Once the water has soaked into the paper, gently rub the back of the paper with your finger. Be careful and only apply light pressure when rubbing the back of the paper. Rubbing in a circular motion will help start the paper to separate from the color laser image.



It is important to work off the top layer of paper before trying to totally remove the paper in a single area. If you rub in one spot too long you will remove the color laser image from the wood. This will tend to occur on the edges if the matte gel was not spread evenly across the wood.

Continue to work the top layer of the paper off of the wood as shown below.



When the top layer of the paper is totally removed, you may then start to gradually work the remaining of the paper from the wood. Take it slow and remember to use small amounts of water.

The image below has about 70% of the paper removed from the wood.



The red arrow is pointing out an area where the picture came off the wood. As a reminder, this can be caused by one of the following reasons:

- Too much water
- The matte gel was not evenly applied
- Matte gel was not completely dry
- Too much pressure was applied when removing the paper

Even though the edges tend to rub off, this does give a nice rustic look to the finished image. Many of the examples in the back of this guide have this rustic look. Don't let this discourage you from finishing the project.

Applying the Wax or Wax with Stain

Once all of the paper has been removed from the wood. You can seal the image with a spray or with a paste furniture wax with or with a light stain. The stain will enhance the areas of the wood where the image was removed.

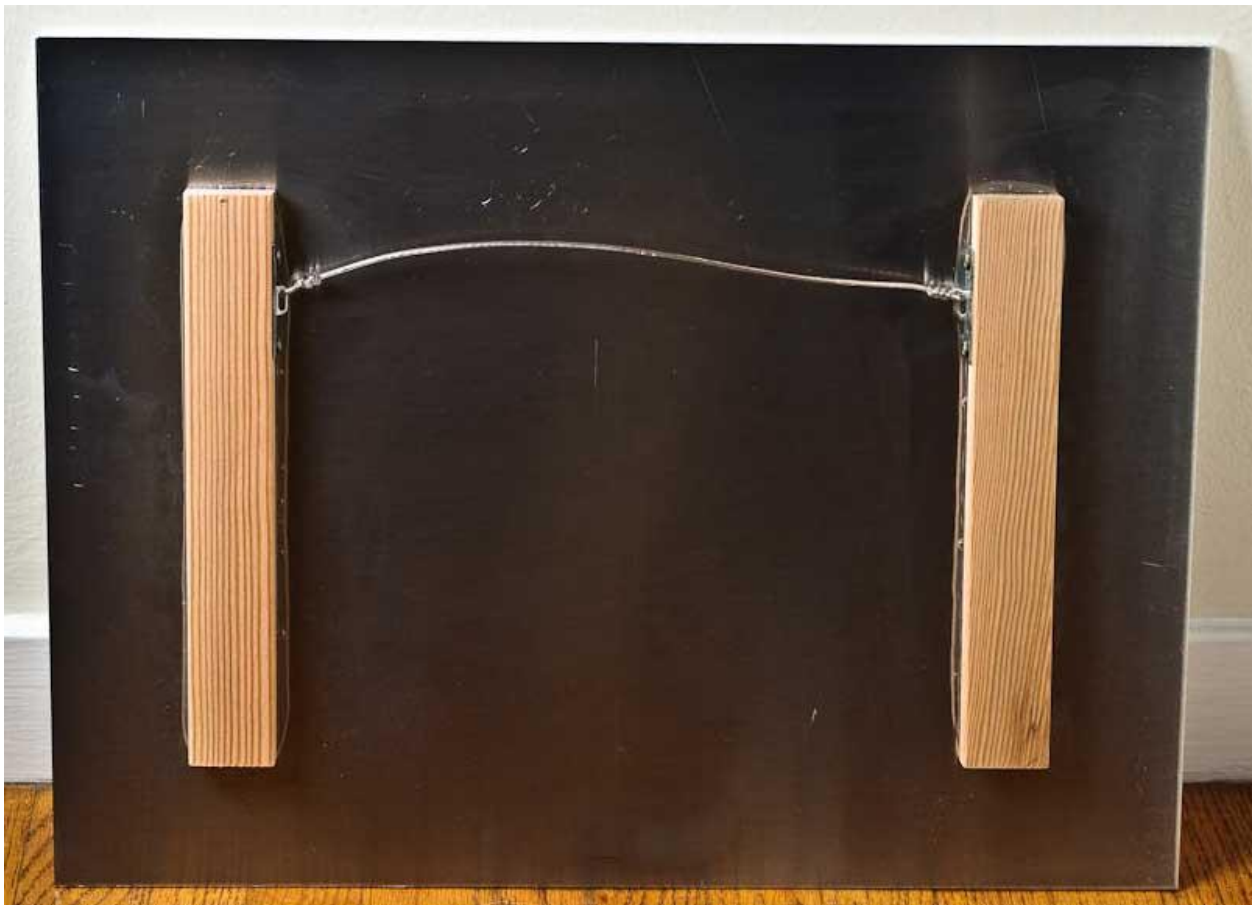
Apply the wax with a clean cloth and allow it to dry for 10 minutes. Working with the grain, take a piece of 000 steel wool to remove the wax. This will also seal the image and allow the colors to be more vibrant.



Hanging your Artwork

You have several options when it comes to hanging your finished picture on wood. Basic hanger will work fine to display you picture on wood.

One very popular method is to float the picture on wood off of the wall. This is very easy to create but will require two strips of wood, wood glue, wire with hangers.



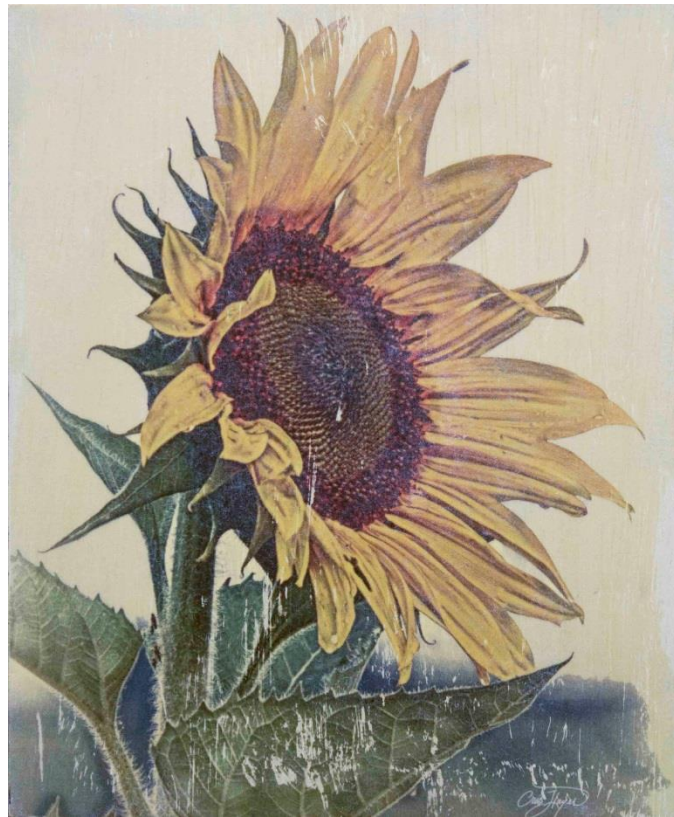
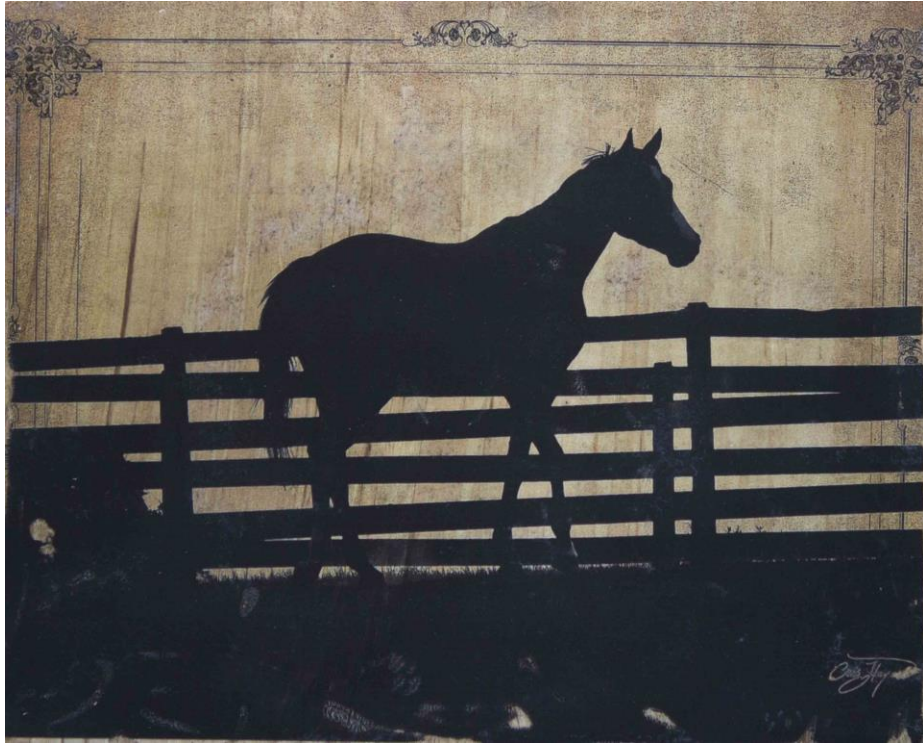
Floating the picture of wood is the best way to show off your artwork.



The hope is you will create a piece of art which can be enjoyed by everyone for many years.

Examples of Pictures on Wood from Cris Hayes and marvinduke.com





Website Links

<http://marvinduke.com/pictures-on-wood-step-by-step-guide.html>

<http://astore.amazon.com/artsprints-20>

<http://1-cris-hayes.artistwebsites.com/>

<http://www.zazzle.com/mbr/238621146457173313>

http://www.artflakes.com/en/shop/cris-hayes?mode=buy&sort_by=popular&alias=cris-hayes&locale=en

<http://society6.com/sturgil>

<http://www.cafepress.com/AugustaAmenCornerGolfGifts>

Pinterest <http://www.pinterest.com/sturgils>

Twitter @Featured_Artist

Facebook Page www.facebook.com/cris.hayes